

River Courses

N 6° E 86.3

N 15° E 56

N 38½° E 15

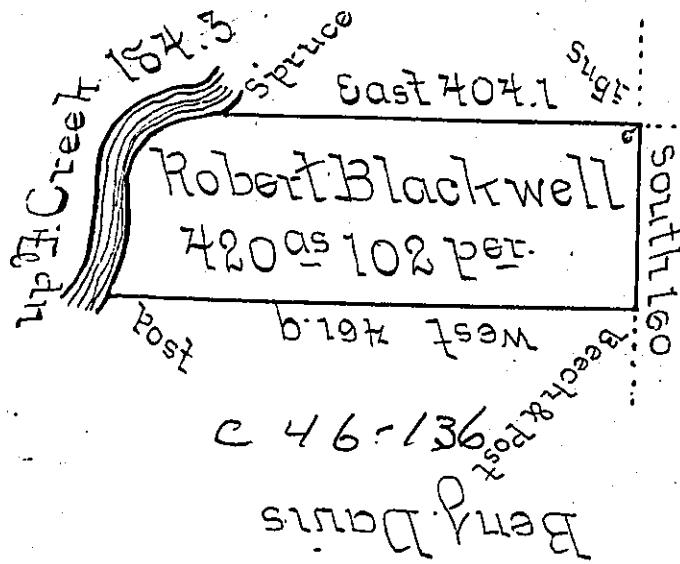
N 63° E 18

N 85° E 9

P. 184.3

Robt Gilman

#58-207



Situate on the East side of and adjoining French Creek in Allegheny County containing 420^a 102 Perches and Allowance of six Percent for Roads &c. Surveyed the 12th Day of November 1794 in pursuance of a Warrant Dated the 13th April 1792.

Wm Power D.H.S.E

To Genl Brodhead Esq }
 Surveyor General }

IN TESTIMONY that the above is a copy of the original remaining on file in the Department of Internal Affairs of Pennsylvania, made conformably to an Act of Assembly approved the 16th day of February, 1833, I have hereunto set my Hand and caused the Seal of said Department to be affixed at Harrisburg, this second day of July 1901.

James J. [Signature]
 Secretary of Internal Affairs.